

PLAN NOTES

NOTE: PROVIDE R-20 BATTE INSULATION TYP WITH VAPOR BARRIER ON WARM SIDE OF WALL BEHIND THE DRYWALL AT ALL EXTERIOR WALL TYP

NOTE: PROVIDE R-49 BATTE INSULATION AT ALL ROOF LOCATIONS (AT PARTIAL ROOFS)

NOTE: SEE A-101 FOR WALL PARTITIONS TYPES

GFI OUTLET @ ALL WET LOCATIONS, BATHROOMS, POWER ROOM AND KITCHEN



PLATO
MARINAKOS, JR.
ARCHITECT, LLC

www.plato-studio.com

107 S 2nd Street
4th Floor
Philadelphia, PA 19106
267-866-0930 OFFICE
267-866-0931 DIRECT
plato@plato-studio.com

PROGRESS SET
NOT FOR
CONSTRUCTION

ARCHITECT SEAL MUST BE IN RED INK

OWNER
V2 PROPERTIES LLC

ONE CALL #:



Know what's below.
Call before you dig.

SITE SAFETY

It is the responsibility of the general contractor and/or the contractor listed as the licensed entity on the building permit per the municipality to ensure all site safety requirements are in place and followed, prior to, during, and after the commencement of the construction process until they are 100% complete and have received a building certificate of occupancy by governing agencies. They are also responsible for any unsafe conditions caused by or related to their sub-contractors' work. Plato Marinakos, Architect LLC, and their professional consultants (associated with these documents) are not responsible for means and methods of construction, and/or site safety, including, but not limited to, osha construction safety requirements, standard construction, job-site safety, job-site safety training of workers, safe work site organization, safety direction and/or safety engineering of required safety elements. It is the sole responsibility of the licensed contractor to ensure that all site safety measures are in accordance with the governing authorities. Please refer to OSHA website (www.osha.gov) for additional training and information requirements for site safety compliance.

REV	DATE	DESCRIPTION

APPROVAL STAMP

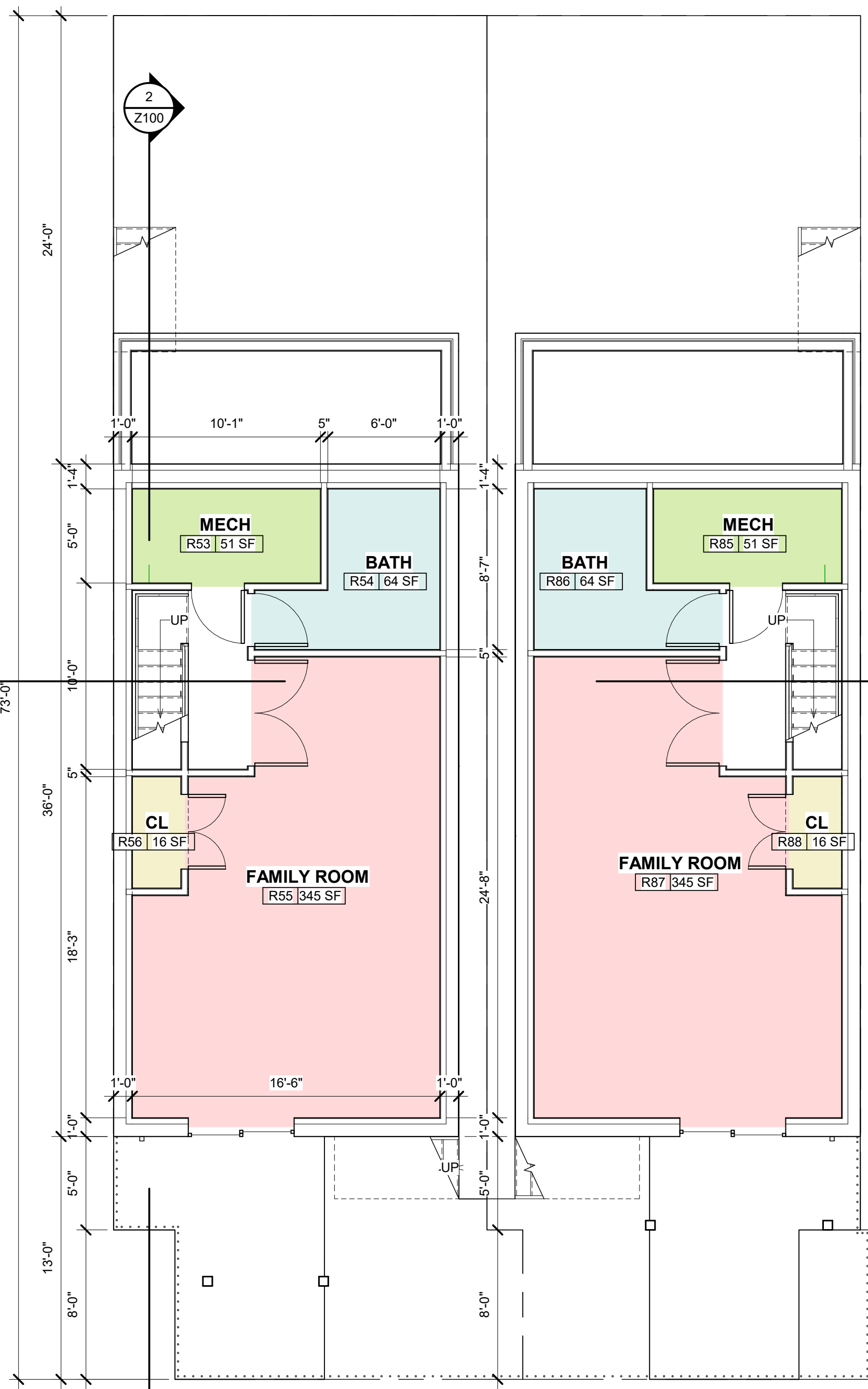
240 AND 242 KALOS STREET
Philadelphia, PA. 19128

FLOOR PLANS

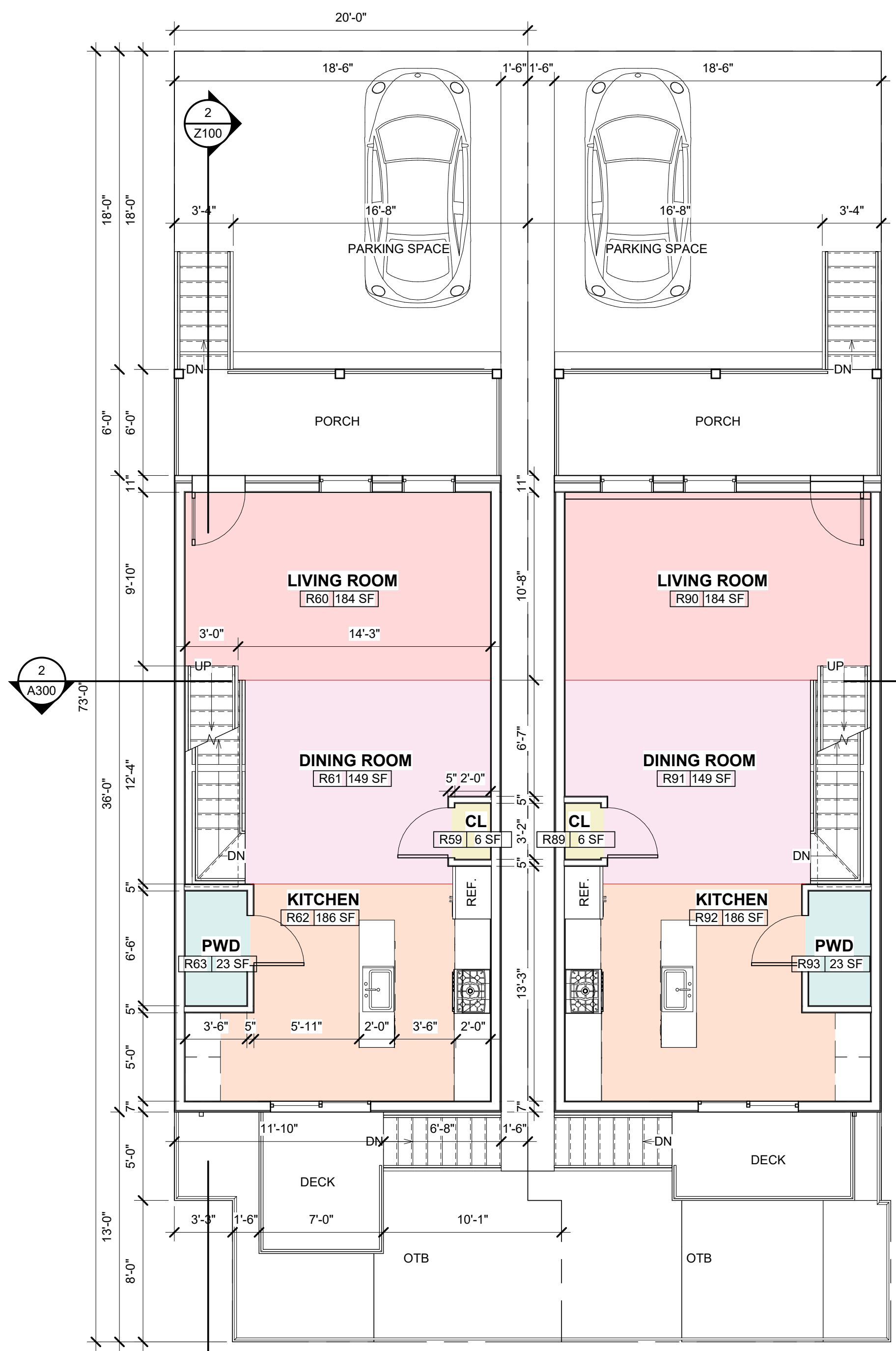
Project number	NA
Date	11/04/21
Drawn by	Author
Checked by	Checker

A101

Scale As indicated



1 BASEMENT PLAN
A101 SCALE: 3/16" = 1'-0"



3 1 - Floor Plan (Proposed)
A101 SCALE: 3/16" = 1'-0"

PLAN NOTES

NOTE: PROVIDE R-20 BATTE INSULATION TYP WITH VAPOR BARRIER ON WARMSIDE OF WALL BEHIND THE DRYWALL AT ALL EXTERIOR WALL TYP

NOTE: PROVIDE R-49 BATTE INSULATION AT ALL ROOF LOCATIONS (AT PARTIAL ROOFS)

NOTE: SEE A-101 FOR WALL PARTITIONS TYPES

GFI OUTLET
@ ALL WET LOCATIONS, BATHROOMS, POWER ROOM AND KITCHEN



PLATO
MARINAKOS, JR.
ARCHITECT, LLC

www.plato-studio.com

107 S 2nd Street
4th Floor
Philadelphia, PA 19106
267-866-0930 OFFICE
267-866-0931 DIRECT
plato@plato-studio.com

PROGRESS SET
NOT FOR
CONSTRUCTION

ARCHITECT SEAL MUST BE IN RED INK

OWNER
V2 PROPERTIES LLC

ONE CALL #:



Know what's below.
Call before you dig.

SITE SAFETY

It is the responsibility of the general contractor and/or the contractor listed as the licensed entity on the building permit per the municipality to ensure all site safety requirements are in place and followed, prior to, during, and after the commencement of the construction process until they are 100% complete and have received a building certificate of occupancy by governing agencies. They are also responsible for any unsafe conditions caused by or related to their sub-contractors' work. Plato Marinakos, Architect LLC, and their professional consultants (associated with these documents) are not responsible for means and methods of construction, and/or site safety, including, but not limited to, osha construction safety requirements, standard construction, job site safety, job site safety training of workers, safe work site organization, safety direction and/or safety engineering of required safety elements. It is the sole responsibility of the licensed contractor to ensure that all site safety measures are in accordance with the governing authorities. Please refer to OSHA website (www.osha.gov) for additional training and information requirements for site safety compliance.

REV	DATE	DESCRIPTION

APPROVAL STAMP

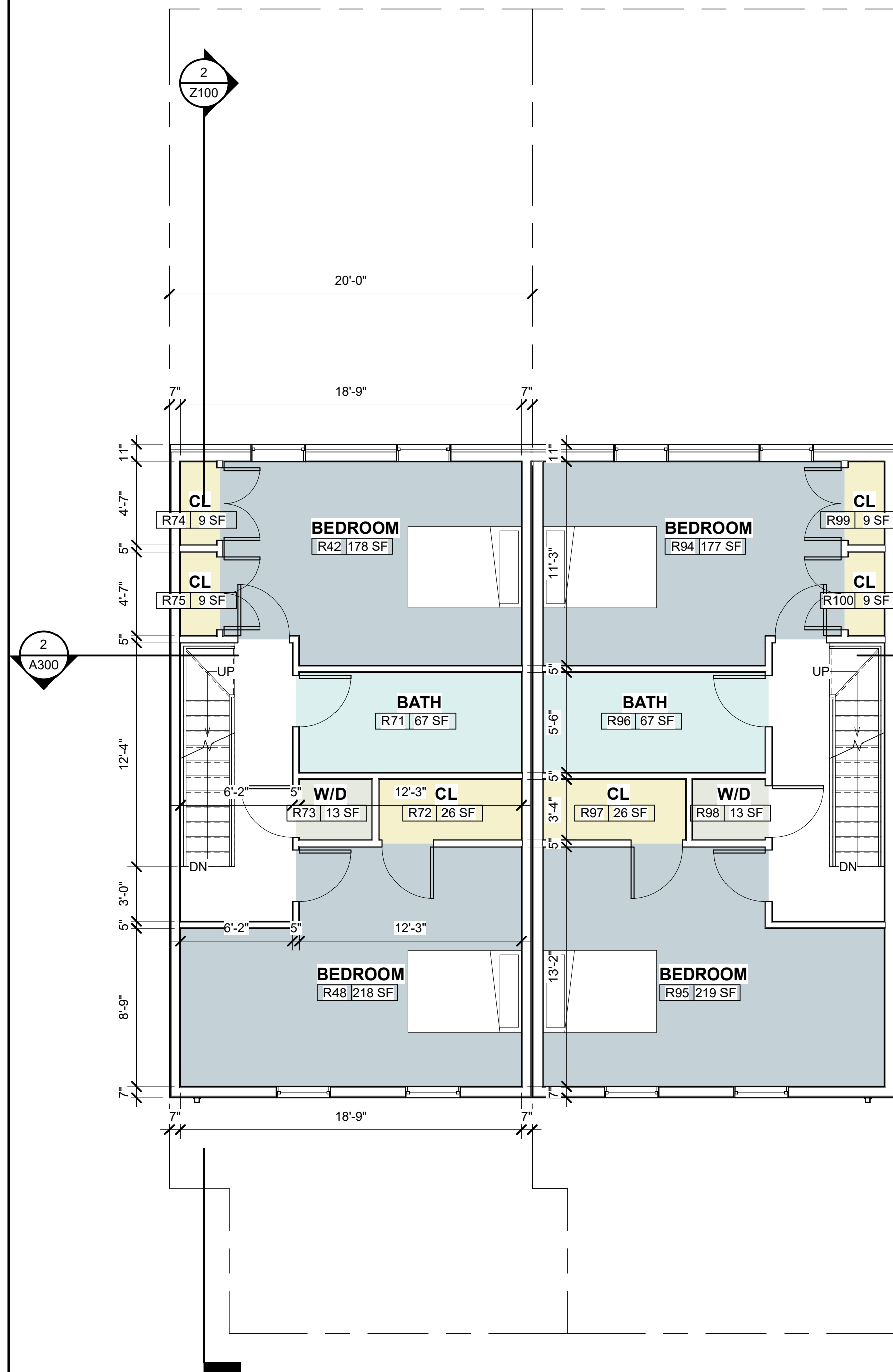
240 AND 242 KALOS STREET
Philadelphia, PA. 19128

FLOOR PLANS

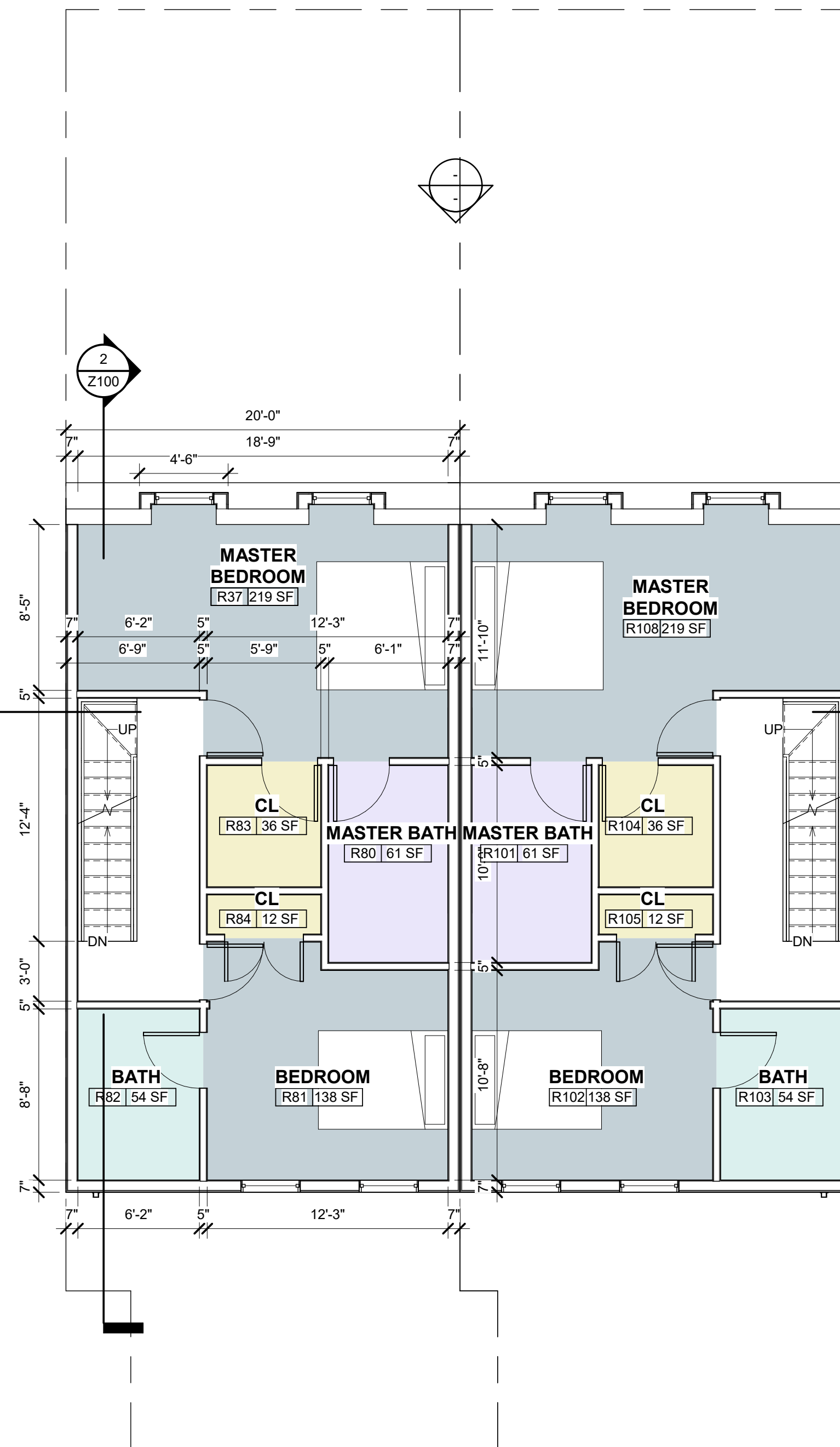
Project number	NA
Date	11/04/21
Drawn by	Author
Checked by	Checker

A101.1

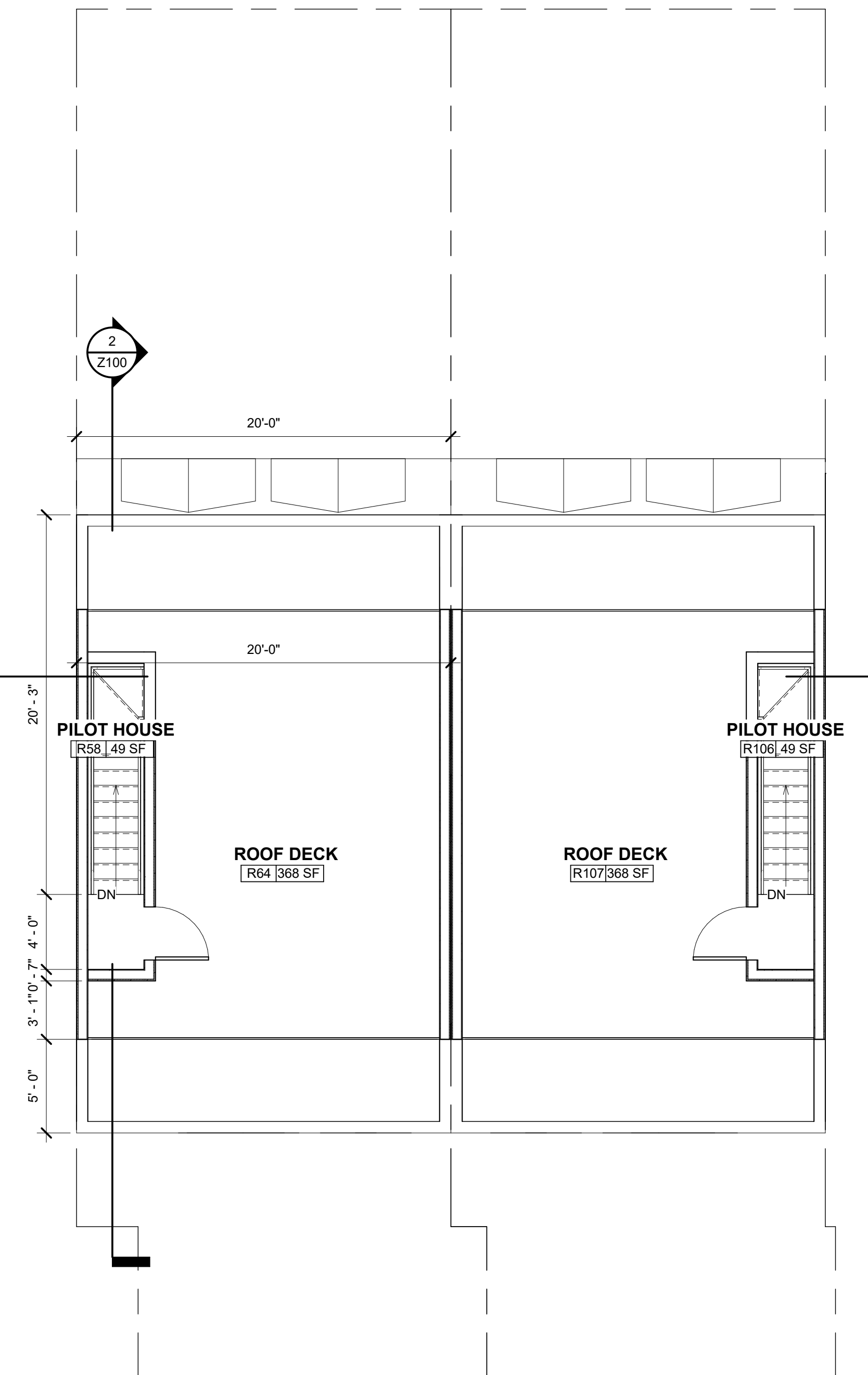
Scale As indicated



1 SECOND FLOOR PLAN
A101.1 SCALE: 3/16" = 1'-0"



2 THIRD FLOOR PLAN
A101.1 SCALE: 3/16" = 1'-0"



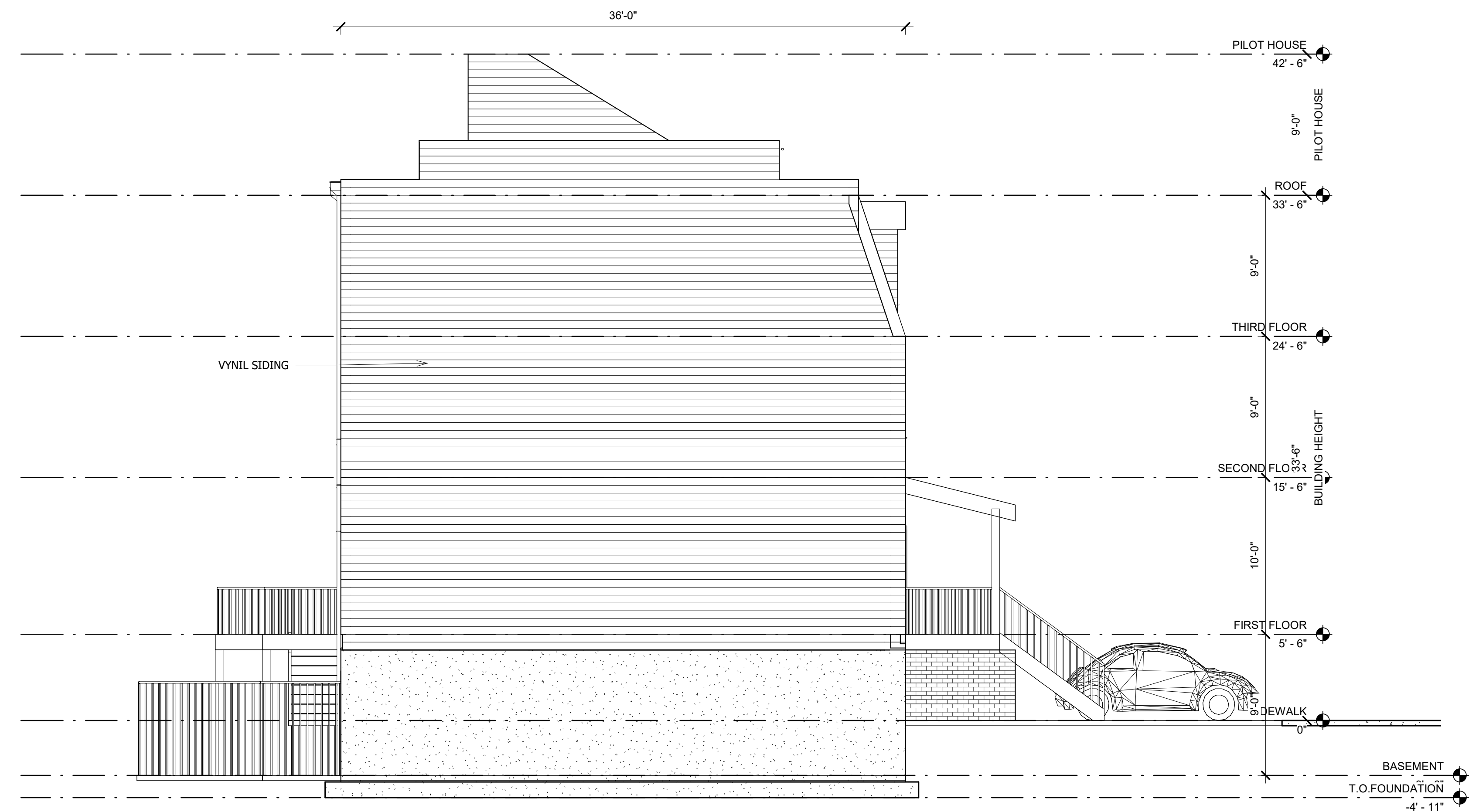
3 ROOF PLAN
A101.1 SCALE: 3/16" = 1'-0"



1 FRONT ELEVATION
SCALE: 3/16" = 1'-0"



2 REAR ELEVATION
SCALE: 3/16" = 1'-0"



3 SIDE ELEVATION
SCALE: 3/16" = 1'-0"



PLATO
MARINAKOS, JR.
ARCHITECT, LLC

www.plato-studio.com

107 S 2nd Street
4th Floor
Philadelphia, PA 19106
267-866-0930 OFFICE
267-866-0931 DIRECT
plato@plato-studio.com

**PROGRESS SET
NOT FOR
CONSTRUCTION**

ARCHITECT SEAL MUST BE IN RED INK

OWNER
V2 PROPERTIES LLC

ONE CALL #:



SITE SAFETY

It is the responsibility of the general contractor and/or the contractor listed as the licensed entity on the building permit per the municipality to ensure all site safety requirements are in place and followed, prior to, during, and after the commencement of the construction process until they are 100% complete and have received a building certificate of occupancy by governing agencies. They are also responsible for any unsafe conditions caused by or related to their sub-contractors' work. Plato Marinakos, Architect LLC, and their professional consultants (associated with these documents) are not responsible for means and methods of construction, and/or site safety, including, but not limited to, OSHA construction safety requirements, standard construction, job-site safety, job-site safety training of workers, safe work site organization, safety direction and/or safety engineering of required safety elements. It is the sole responsibility of the licensed contractor to ensure that all site safety measures are in accordance with the governing authorities. Please refer to OSHA website (www.osha.gov) for additional training and information requirements for site safety compliance.

REV	DATE	DESCRIPTION

APPROVAL STAMP

240 AND 242 KALOS STREET
Philadelphia, PA. 19128

ELEVATIONS

Project number	NA
Date	11/04/21
Drawn by	Author
Checked by	Checker

A200

Scale 3/16" = 1'-0"

PROGRESS SET
NOT FOR
CONSTRUCTION

ARCHITECT SEAL MUST BE IN RED INK

OWNER
V2 PROPERTIES LLC

ONE CALL #:



Know what's below.
Call before you dig.

SITE SAFETY

It is the responsibility of the general contractor and/or the contractor listed as the licensed entity on the building permit per the municipality to ensure all site safety requirements are in place and followed, prior to, during, and after the commencement of the construction process until they are 100% complete and have received a building certificate of occupancy by governing agencies. They are also responsible for any unsafe conditions caused by or related to their sub-contractors' work. Plato Marinakos, Architect LLC, and their professional consultants (associated with these documents) are not responsible for means and methods of construction, and/or site safety, including, but not limited to, OSHA construction safety requirements, standard construction, job-site safety, job-site safety training of workers, safe work site organization, safety direction and/or safety engineering of required safety elements. It is the sole responsibility of the licensed contractor to ensure that all site safety measures are in accordance with the governing authorities. Please refer to OSHA website (www.osha.gov) for additional training and information requirements for site safety compliance.

REV	DATE	DESCRIPTION

APPROVAL STAMP

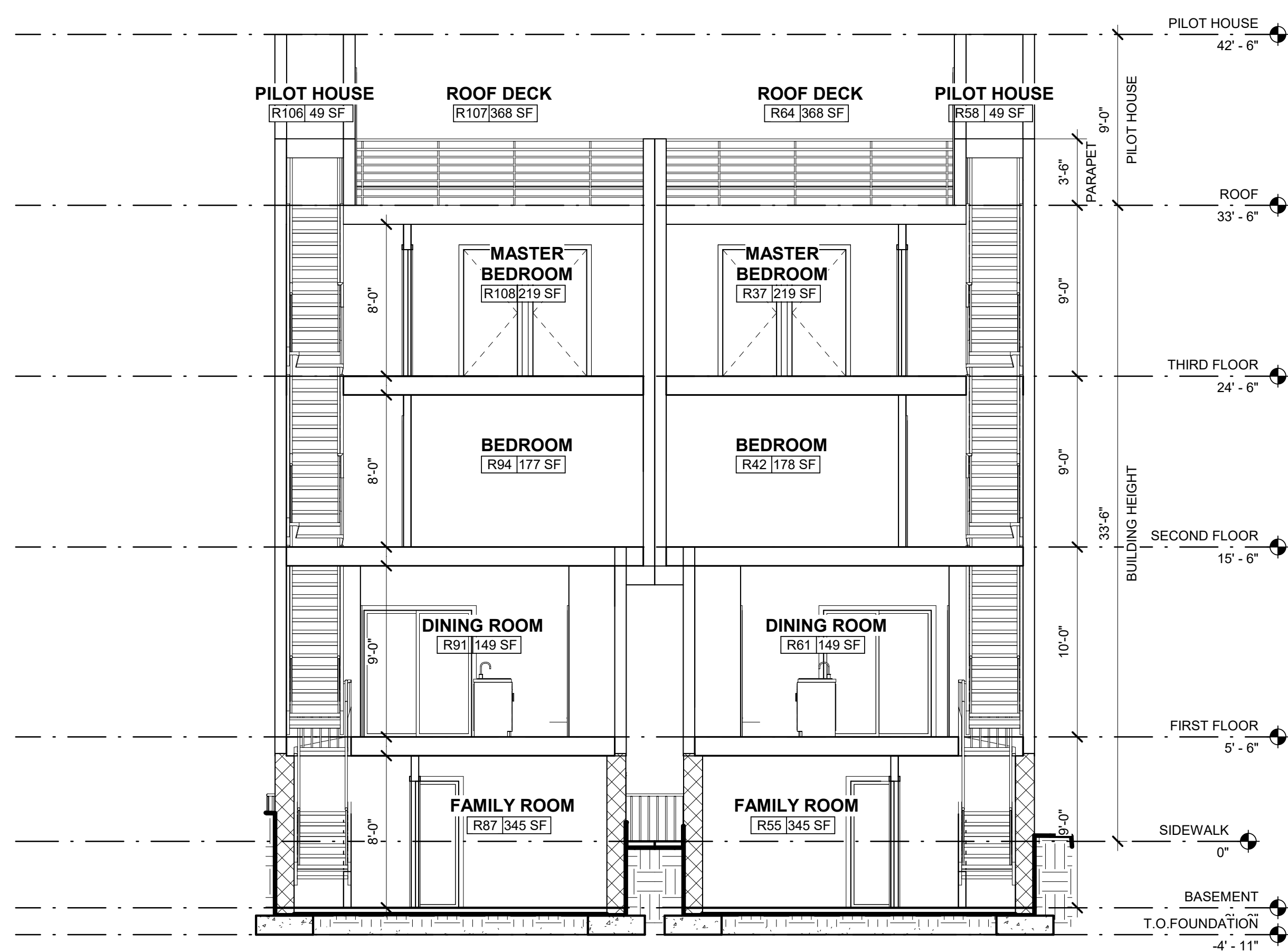
240 AND 242 KALOS STREET
Philadelphia, PA. 19128

SECTIONS

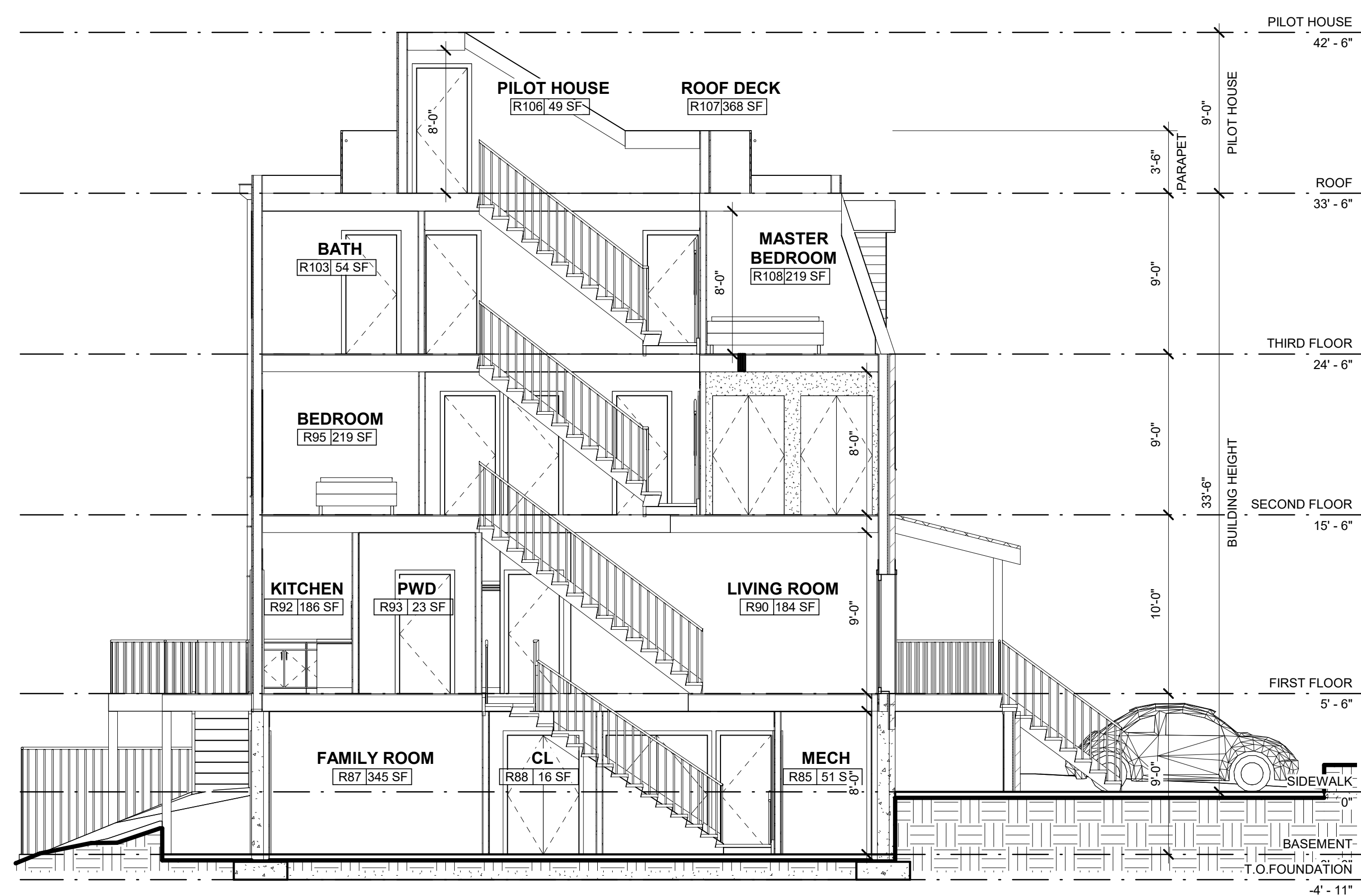
Project number	NA
Date	11/04/21
Drawn by	Author
Checked by	Checker

A300

Scale 3/16" = 1'-0"



2 CROSS SECTION
A300 SCALE: 3/16" = 1'-0"



1 LONGITUDINAL SECTION
A300 SCALE: 3/16" = 1'-0"